

\$639,900 - 217 Chelsea Place, Chestermere

MLS® #A2205578

\$639,900

4 Bedroom, 3.00 Bathroom, 1,907 sqft

Residential on 0.08 Acres

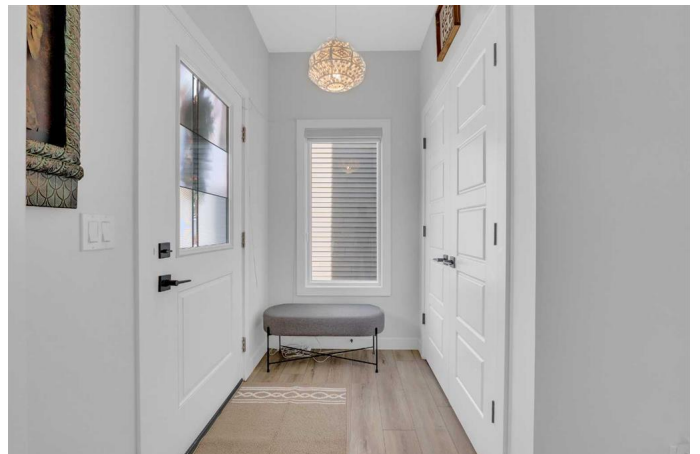
Chelsea_CH, Chestermere, Alberta

Welcome to this charming and fully upgraded detached home, built on a traditional lot, offers a well-designed layout with a main floor featuring a full bedroom and bathroom—perfect for guests or easy accessibility. Upstairs, you'll find three spacious bedrooms plus a bonus room, ideal for a home office, playroom, or extra living space. The backyard is equipped with a concrete pad for 2-car parking and a wooden deck, creating a great space for outdoor enjoyment. A side entry leads to the partially finished basement, providing additional potential for future development. Conveniently located near all amenities, with easy access to grocery stores, cineplex, the airport, highways, and more, this home offers both comfort and convenience for modern living! Basement is partially finished with electrical fittings, bathroom rough-ins, laundry rough-ins and also has second furnace for future basement development.

Built in 2023

Essential Information

MLS® #	A2205578
Price	\$639,900
Bedrooms	4
Bathrooms	3.00
Full Baths	3
Square Footage	1,907



Acres	0.08
Year Built	2023
Type	Residential
Sub-Type	Detached
Style	2 Storey
Status	Active

Community Information

Address	217 Chelsea Place
Subdivision	Chelsea_CH
City	Chestermere
County	Chestermere
Province	Alberta
Postal Code	T1X 2T1

Amenities

Parking Spaces	2
Parking	Off Street, Parking Pad

Interior

Interior Features	Bathroom Rough-in, Closet Organizers, Kitchen Island, No Animal Home, Pantry, Quartz Counters, Separate Entrance, Walk-In Closet(s)
Appliances	Dishwasher, Gas Stove, Microwave, Range Hood, Refrigerator, Washer/Dryer
Heating	Forced Air
Cooling	None
Fireplace	Yes
# of Fireplaces	1
Fireplaces	Electric
Has Basement	Yes
Basement	Exterior Entry, Full, Partially Finished

Exterior

Exterior Features	Private Entrance
Lot Description	Back Lane, Back Yard, Interior Lot, Lawn
Roof	Asphalt Shingle
Construction	Concrete, Vinyl Siding, Wood Frame
Foundation	Poured Concrete

Additional Information

Date Listed	March 25th, 2025
Days on Market	40
Zoning	R-1PRL

Listing Details

Listing Office	Executive Real Estate Services
----------------	--------------------------------

Data is supplied by Pillar 9â„¢ MLSÂ® System. Pillar 9â„¢ is the owner of the copyright in its MLSÂ® System. Data is deemed reliable but is not guaranteed accurate by Pillar 9â„¢. The trademarks MLSÂ®, Multiple Listing ServiceÂ® and the associated logos are owned by The Canadian Real Estate Association (CREA) and identify the quality of services provided by real estate professionals who are members of CREA. Used under license.