

\$280,000 - A, 134a 6 Avenue, Strathmore

MLS® #A2211475

\$280,000

3 Bedroom, 1.00 Bathroom, 933 sqft

Residential on 0.02 Acres

Downtown_Strathmore, Strathmore, Alberta

Move in NOW.3 Bedrooms. In Suite Laundry. Storage Shed. Assigned Parking Stall. Rear Alley.Off Street Parking. Main Floor Living. open Concept. Bright and Spacious. Private South Deck. Downtown Strathmore. Directly Across from Sacred Heart School. K-12. Steps to Kinsmen Park/Lake.Pet Friendly with Board Approval

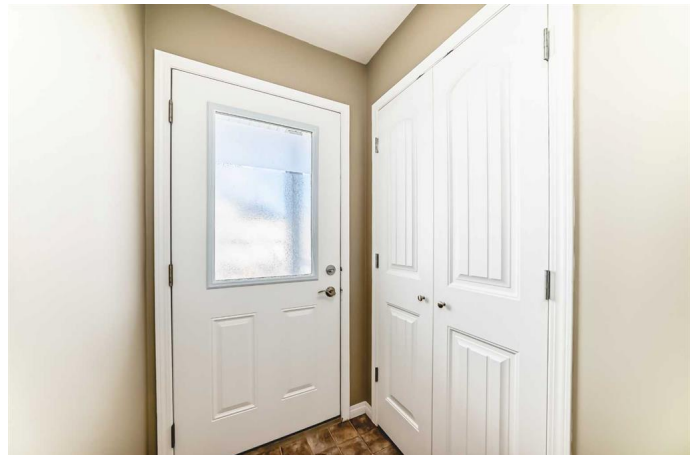
Built in 2013

Essential Information

MLS® #	A2211475
Price	\$280,000
Bedrooms	3
Bathrooms	1.00
Full Baths	1
Square Footage	933
Acres	0.02
Year Built	2013
Type	Residential
Sub-Type	Apartment
Style	Single Level Unit
Status	Active

Community Information

Address	A, 134a 6 Avenue
Subdivision	Downtown_Strathmore
City	Strathmore
County	Wheatland County



Province	Alberta
Postal Code	T1P 1B8

Amenities

Amenities	None
Parking Spaces	1
Parking	Assigned, Off Street, Stall

Interior

Interior Features	No Animal Home, No Smoking Home
Appliances	Dishwasher, Electric Stove, Refrigerator, Washer/Dryer, Window Coverings
Heating	Forced Air, Natural Gas
Cooling	None
# of Stories	2

Exterior

Exterior Features	None
Roof	Asphalt Shingle
Construction	Vinyl Siding, Wood Frame

Additional Information

Date Listed	April 14th, 2025
Days on Market	78
Zoning	R3

Listing Details

Listing Office	RE/MAX Landan Real Estate
----------------	---------------------------

Data is supplied by Pillar 9â„¢ MLS® System. Pillar 9â„¢ is the owner of the copyright in its MLS® System. Data is deemed reliable but is not guaranteed accurate by Pillar 9â„¢. The trademarks MLS®, Multiple Listing Service® and the associated logos are owned by The Canadian Real Estate Association (CREA) and identify the quality of services provided by real estate professionals who are members of CREA. Used under license.