

\$329,900 - 202, 1410 2 Street Sw, Calgary

MLS® #A2223001

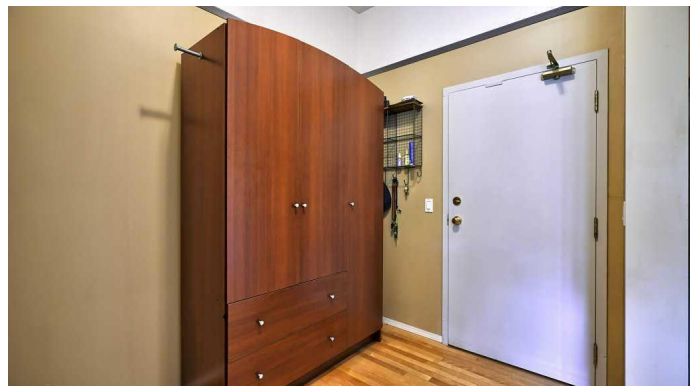
\$329,900

2 Bedroom, 2.00 Bathroom, 885 sqft

Residential on 0.00 Acres

Beltline, Calgary, Alberta

Welcome to #202, 1410 1 Street SW â€“ a well-laid-out 2-bedroom, 2-bathroom apartment in the desirable Beltline community. Offering nearly 900 sq ft of comfortable living space, this unit is perfect for first-time buyers, downsizers, or investors looking for a centrally located property. The open floor plan features a bright living and dining area with 10 foot ceilings and focused around a cozy gas fireplace, a well-equipped kitchen with plenty of cabinet and counter space, and large windows that allow for plenty of natural light. The bedrooms are thoughtfully positioned on opposite sides of the unit, providing added privacyâ€”ideal for roommates or guests. The primary bedroom includes a spacious closet and 4-piece ensuite, while the second bedroom is serviced by a 3 piece main bathroom. Enjoy your own private balcony overlooking the charming courtyard , in-suite laundry, and the convenience of underground titled parking. The building also offers a storage locker, bike storage, and secure entry. Located steps from cafes, restaurants, shopping, parks, and transit this condo offers exceptional urban living in one of Calgaryâ€™s most walkable neighborhoods. Condo Fees Include Heat, Water and Sewer and the building is Pet-friendly (with board approval). Situated by Haultain Park with green space and tennis courts, walking distance to the Stampede Grounds and surrounded by bars and restaurants of this vibrant neighbourhood, this condo is the ideal



place to call home.

Built in 1995

Essential Information

| | |
|----------------|-------------------|
| MLS® # | A2223001 |
| Price | \$329,900 |
| Bedrooms | 2 |
| Bathrooms | 2.00 |
| Full Baths | 2 |
| Square Footage | 885 |
| Acres | 0.00 |
| Year Built | 1995 |
| Type | Residential |
| Sub-Type | Apartment |
| Style | Single Level Unit |
| Status | Active |

Community Information

| | |
|-------------|-----------------------|
| Address | 202, 1410 2 Street Sw |
| Subdivision | Beltline |
| City | Calgary |
| County | Calgary |
| Province | Alberta |
| Postal Code | T2R 1R1 |

Amenities

| | |
|----------------|---|
| Amenities | Bicycle Storage, Secured Parking, Storage |
| Parking Spaces | 1 |
| Parking | Parkade, Underground |

Interior

| | |
|-------------------|---|
| Interior Features | Breakfast Bar, Ceiling Fan(s), Closet Organizers, High Ceilings, No Smoking Home |
| Appliances | Dishwasher, Dryer, Garage Control(s), Gas Stove, Range Hood, Refrigerator, Washer, Window Coverings |
| Heating | Baseboard |
| Cooling | None |
| Fireplace | Yes |

| | |
|-----------------|------------------|
| # of Fireplaces | 1 |
| Fireplaces | Gas, Living Room |
| # of Stories | 5 |

Exterior

| | |
|-------------------|----------------------------------|
| Exterior Features | Balcony, BBQ gas line, Courtyard |
| Construction | Brick, Stucco, Wood Frame |

Additional Information

| | |
|----------------|----------------|
| Date Listed | May 20th, 2025 |
| Days on Market | 53 |
| Zoning | CC-MH |

Listing Details

| | |
|----------------|-------------|
| Listing Office | Real Broker |
|----------------|-------------|

Data is supplied by Pillar 9â„¢ MLS® System. Pillar 9â„¢ is the owner of the copyright in its MLS® System. Data is deemed reliable but is not guaranteed accurate by Pillar 9â„¢. The trademarks MLS®, Multiple Listing Service® and the associated logos are owned by The Canadian Real Estate Association (CREA) and identify the quality of services provided by real estate professionals who are members of CREA. Used under license.