

\$1,275,000 - 250051 Range Road 250, Rural Wheatland County

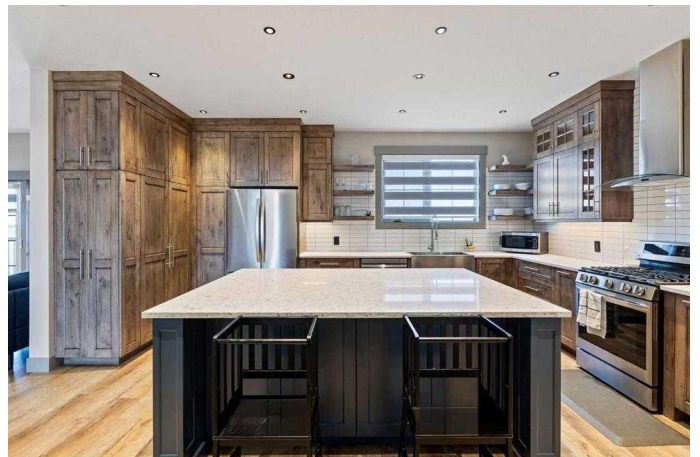
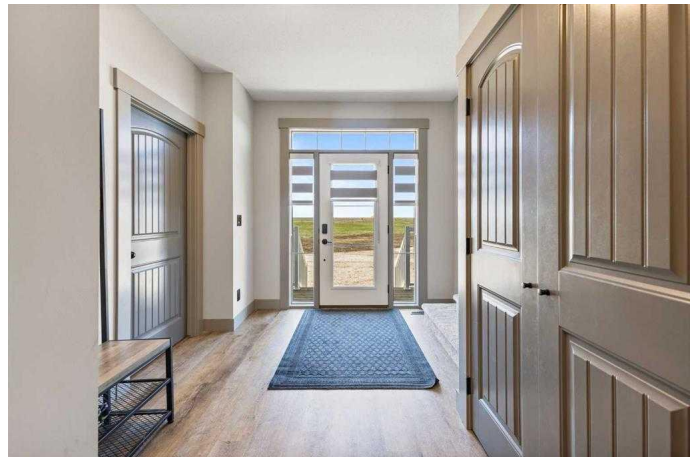
MLS® #A2227482

\$1,275,000

5 Bedroom, 3.00 Bathroom, 2,885 sqft
Residential on 10.00 Acres

NONE, Rural Wheatland County, Alberta

Welcome to Rural Wheatland County - This stunning home is situated on a 10 acre parcel and is conveniently located just 6 minutes from the Town of Strathmore. Easy access to all major amenities including schools, hospitals/clinics, shops, grocery stores, entertainment & golf courses! The perfect retreat for that equestrian or hobby farmer! With ample space for additional barns, corrals, coops or maybe just a hobby shop to store all your toys. This turn key property has endless potential! As you approach the house you are welcomed by a large 3/4 wrap around porch & beautiful hardy board siding. Through the front door you are welcomed by a large double closet, a walkthrough mudroom featuring laundry & side entrance + tons of storage. Down the hall or through the mudroom you will find the Absolutely stunning custom kitchen - including beautiful wooden cabinetry (with organizers & lemans), a MASSIVE oversized quartz island, gas range/cooktop, oversized basin sink, pearl plumbing fixtures, floating shelves, custom under cabinet & toe kick LED lighting (linked to night lights that lead to the upstairs bedrooms). The main level also features a generous sized living room with gas fireplace, a large dining room & office space, as well as a 2 piece bathroom. Upstairs you will find 4 generous sized guest bedrooms, a massive 6 piece guest bathroom (featuring 2 separate toilets!). A large primary bedroom completes



the second floor, and includes a walk-in closet,
5 piece ensuite bathroom & absolutely
STUNNING VIEWS! - This home has so many
upgrades! custom HIGH-END LED pot lights
throughout, rough in for hot water circulation
pump, vaccuflow, motion closet lighting,
beautiful window coverings and so much more!
With 2800 sqft of developed living space, this
home is completely turn key! + the basement
features 1400 sqft of un-developed
POTENTIAL!

Built in 2024

Essential Information

MLS® #	A2227482
Price	\$1,275,000
Bedrooms	5
Bathrooms	3.00
Full Baths	2
Half Baths	1
Square Footage	2,885
Acres	10.00
Year Built	2024
Type	Residential
Sub-Type	Detached
Style	2 Storey, Acreage with Residence
Status	Active

Community Information

Address	250051 Range Road 250
Subdivision	NONE
City	Rural Wheatland County
County	Wheatland County
Province	Alberta
Postal Code	T1P 0M4

Amenities

Parking	Parking Pad
---------	-------------

Interior

Interior Features	Bookcases, Built-in Features, Closet Organizers, Double Vanity, Open Floorplan, Soaking Tub, Walk-In Closet(s)
Appliances	Dishwasher, Gas Stove, Range Hood, Refrigerator, Washer/Dryer, Window Coverings
Heating	Forced Air, Natural Gas
Cooling	None
Fireplace	Yes
# of Fireplaces	1
Fireplaces	Family Room, Gas
Has Basement	Yes
Basement	Full, Unfinished

Exterior

Exterior Features	Other
Lot Description	Back Yard, Front Yard, Farm
Roof	Asphalt Shingle
Construction	Mixed
Foundation	Poured Concrete

Additional Information

Date Listed	June 5th, 2025
Days on Market	81
Zoning	1

Listing Details

Listing Office	eXp Realty
----------------	------------

Data is supplied by Pillar 9â„¢ MLS® System. Pillar 9â„¢ is the owner of the copyright in its MLS® System. Data is deemed reliable but is not guaranteed accurate by Pillar 9â„¢. The trademarks MLS®, Multiple Listing Service® and the associated logos are owned by The Canadian Real Estate Association (CREA) and identify the quality of services provided by real estate professionals who are members of CREA. Used under license.