

\$259,900 - 108, 2200 Woodview Drive Sw, Calgary

MLS® #A2229794

\$259,900

2 Bedroom, 1.00 Bathroom, 851 sqft

Residential on 0.00 Acres

Woodlands, Calgary, Alberta

This 851 sq.ft bungalow style, 2 bedrooms , end unit townhouse is located in SW in popular Sierra Gardens. Home is on the North edge of the complex facing onto detached homes and only steps away from city park with playground. Home features newer laminate flooring, fresh paint and in suite laundry. Great condo with reasonable condo fees, in established neighborhood with great proximity to Fish Creek Park, Glenmore Park, Shopping and schools. Great buy for Investors or First Time Buyers.

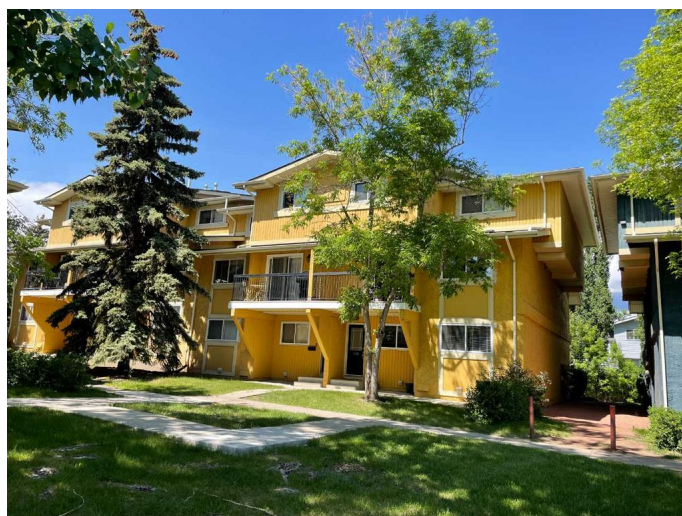
Built in 1978

Essential Information

MLS® #	A2229794
Price	\$259,900
Bedrooms	2
Bathrooms	1.00
Full Baths	1
Square Footage	851
Acres	0.00
Year Built	1978
Type	Residential
Sub-Type	Row/Townhouse
Style	Bungalow
Status	Active

Community Information

Address 108, 2200 Woodview Drive Sw



Subdivision	Woodlands
City	Calgary
County	Calgary
Province	Alberta
Postal Code	T2W3N6

Amenities

Amenities	Parking
Parking Spaces	1
Parking	Assigned, Stall

Interior

Interior Features	No Smoking Home
Appliances	Dishwasher, Dryer, Electric Range, Range Hood, Refrigerator, Washer
Heating	Forced Air, Natural Gas
Cooling	Other
Has Basement	Yes
Basement	Crawl Space, None

Exterior

Exterior Features	Lighting
Lot Description	Few Trees, Low Maintenance Landscape
Roof	Asphalt Shingle
Construction	Wood Frame
Foundation	Poured Concrete

Additional Information

Date Listed	June 10th, 2025
Days on Market	21
Zoning	M-C1 d100

Listing Details

Listing Office	MaxWell Capital Realty
----------------	------------------------

Data is supplied by Pillar 9â„¢ MLS® System. Pillar 9â„¢ is the owner of the copyright in its MLS® System. Data is deemed reliable but is not guaranteed accurate by Pillar 9â„¢. The trademarks MLS®, Multiple Listing Service® and the associated logos are owned by The Canadian Real Estate Association (CREA) and identify the quality of services provided by real estate professionals who are members of CREA. Used under license.