

# \$749,000 - 228 Aspenmere Circle, Chestermere

MLS® #A2234416

## \$749,000

4 Bedroom, 3.00 Bathroom, 1,371 sqft  
Residential on 0.13 Acres

Westmere, Chestermere, Alberta

Welcome to 228 Aspenmere Circle – a stunning bungalow nestled in the heart of Chestermere’s sought-after Westmere community with a beautifully landscaped west-facing backyard, ideal for enjoying breathtaking sunsets.

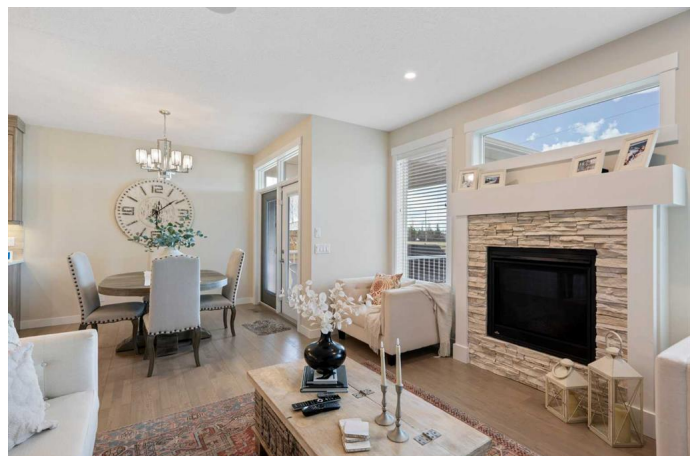
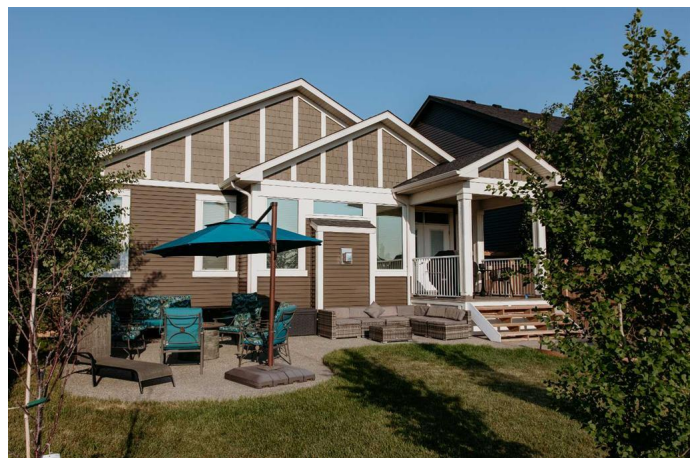
Located on a quiet street and backing onto peaceful green space, this immaculate 4-bedroom, 2.5-bathroom home offers the perfect blend of luxury, comfort, and modern efficiency. Just a short stroll from Chestermere Lake, the amazing COVE BEACH, playgrounds, and dog-friendly areas, this property is a dream for outdoor enthusiasts and families alike.

Inside, you’ll find a spacious main floor featuring a beautiful kitchen and an open-concept living room anchored by a cozy fireplace.

The primary bedroom offers a spa-inspired ensuite with a stand-alone soaker tub and a generous walk-in closet. A second bright bedroom (currently set up as a home office), a stylish 2-piece bath, and a convenient laundry room complete the main level.

The fully finished basement expands your living space with a second large family room, complete with a second fireplace and custom built-ins, plus two additional bedrooms, a full bath, and an oversized furnace/storage room.

Additional features include:



Stainless steel appliance package,

Ceiling speakers wired throughout,

EV charging in the garage,

Rough-in for solar panels.

Meticulously maintained and move-in ready, this home shows true pride of ownership. Donâ€™t miss your chance to own this exceptional property â€” contact your favourite REALTOR® to book your private showing today!

Built in 2018

**Essential Information**

MLS® #	A2234416
Price	\$749,000
Bedrooms	4
Bathrooms	3.00
Full Baths	2
Half Baths	1
Square Footage	1,371
Acres	0.13
Year Built	2018
Type	Residential
Sub-Type	Detached
Style	Bungalow
Status	Active

**Community Information**

Address	228 Aspenmere Circle
Subdivision	Westmere
City	Chestermere
County	Chestermere

Province	Alberta
Postal Code	T1X0T5

### Amenities

Parking Spaces	4
Parking	Aggregate, Double Garage Attached
# of Garages	2

### Interior

Interior Features	French Door, Kitchen Island, Open Floorplan, Pantry, Quartz Counters, See Remarks, Walk-In Closet(s), Wired for Sound
Appliances	Central Air Conditioner, Dishwasher, Garage Control(s), Gas Stove, Range Hood, Refrigerator, Washer/Dryer, Window Coverings
Heating	Fireplace(s), Forced Air, Natural Gas
Cooling	Central Air
Fireplace	Yes
# of Fireplaces	2
Fireplaces	Basement, Family Room, Gas, Mantle, Stone
Has Basement	Yes
Basement	Finished, Full

### Exterior

Exterior Features	BBQ gas line
Lot Description	Back Yard, Backs on to Park/Green Space, Landscaped, No Neighbours Behind
Roof	Asphalt Shingle
Construction	Stone, Vinyl Siding, Wood Frame
Foundation	Poured Concrete

### Additional Information

Date Listed	June 25th, 2025
Days on Market	6
Zoning	R1

### Listing Details

Listing Office	Real Broker
----------------	-------------

Data is supplied by Pillar 9â„¢ MLS® System. Pillar 9â„¢ is the owner of the copyright in its MLS® System. Data is deemed reliable but is not guaranteed accurate by Pillar 9â„¢. The trademarks MLS®, Multiple Listing Service® and the associated logos are owned by The Canadian Real Estate Association (CREA) and identify the quality of services provided by real estate professionals who are members of CREA. Used under license.