

\$299,800 - 218, 4000 Somervale Court Sw, Calgary

MLS® #A2234556

\$299,800

2 Bedroom, 2.00 Bathroom, 846 sqft

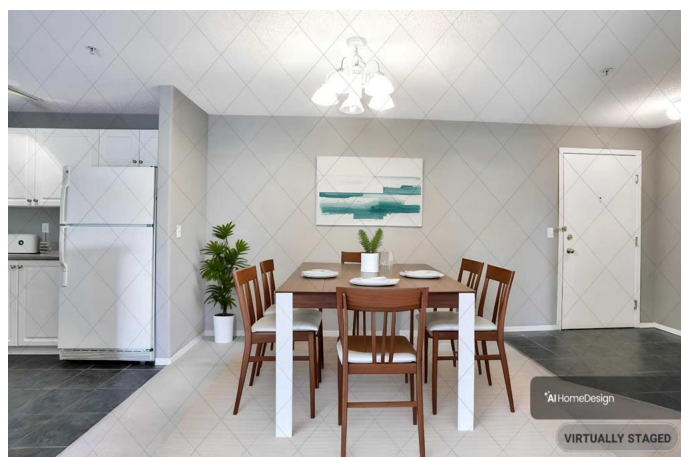
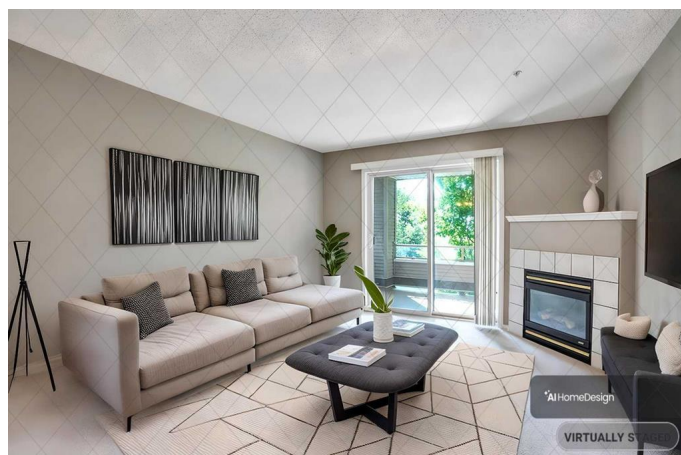
Residential on 0.00 Acres

Somerset, Calgary, Alberta

RARE FIND SE facing 2bdrms 2bath 2parking and LOW condo fee! VIEW of POND from balcony and bedrooms! ---

Donâ€™t miss this incredible opportunity to own a bright and spacious condo with serene wetland views, visible from both the private balcony and each of the two bedrooms. Unit 218 at 4000 Somervale Court SW is thoughtfully designed with southeast exposure, flooding the space with sunlight throughout the day â€” perfect for morning routines or golden-hour relaxation. With two parking stalls and a remarkably low condo fee that covers heat, electricity, and water, this unit delivers unmatched value to young families, professionals, or investors looking for a turnkey property in one of Calgaryâ€™s most connected communities.

The functional layout features distinct living and dining areas, ideal for entertaining or everyday comfort. Bedrooms are strategically placed on opposite sides of the unit to offer additional privacy. Premium upgrades include tiled flooring throughout the foyer, kitchen, and bathrooms; an elegant fireplace; raised breakfast bar; in-suite laundry; and charming architectural touches like rounded corners, full banjo vanities, and mirrored closet doors. Just steps from the Somerset LRT Red Line station, your downtown commute takes approximately 25 minutes. Surrounded by abundant amenities â€” shopping centres, grocery stores, restaurants, banks, schools, a



theatre, library, YMCA, Costco, and more –”
this home offers the perfect mix of tranquility,
functionality, and convenience in southwest
Calgary.

Built in 2001

Essential Information

| | |
|----------------|-------------------|
| MLS® # | A2234556 |
| Price | \$299,800 |
| Bedrooms | 2 |
| Bathrooms | 2.00 |
| Full Baths | 2 |
| Square Footage | 846 |
| Acres | 0.00 |
| Year Built | 2001 |
| Type | Residential |
| Sub-Type | Apartment |
| Style | Single Level Unit |
| Status | Active |

Community Information

| | |
|-------------|------------------------------|
| Address | 218, 4000 Somervale Court Sw |
| Subdivision | Somerset |
| City | Calgary |
| County | Calgary |
| Province | Alberta |
| Postal Code | T2Y 4J3 |

Amenities

| | |
|----------------|---|
| Amenities | Bicycle Storage, Elevator(s), Park, Visitor Parking |
| Parking Spaces | 2 |
| Parking | Stall, Plug-In |

Interior

| | |
|-------------------|---|
| Interior Features | No Smoking Home, Open Floorplan, Walk-In Closet(s) |
| Appliances | Dishwasher, Dryer, Electric Stove, Range Hood, Refrigerator, Washer, Window Coverings |
| Heating | Baseboard, Fireplace(s), Natural Gas |

| | |
|-----------------|------------------|
| Cooling | None |
| Fireplace | Yes |
| # of Fireplaces | 1 |
| Fireplaces | Gas, Glass Doors |
| # of Stories | 4 |

Exterior

| | |
|-------------------|--------------------|
| Exterior Features | Balcony |
| Construction | Veneer, Wood Frame |

Additional Information

| | |
|----------------|-----------------|
| Date Listed | June 25th, 2025 |
| Days on Market | 62 |
| Zoning | M-C2 d75 |

Listing Details

| | |
|----------------|--------------------|
| Listing Office | First Place Realty |
|----------------|--------------------|

Data is supplied by Pillar 9â„¢ MLSÂ® System. Pillar 9â„¢ is the owner of the copyright in its MLSÂ® System. Data is deemed reliable but is not guaranteed accurate by Pillar 9â„¢. The trademarks MLSÂ®, Multiple Listing ServiceÂ® and the associated logos are owned by The Canadian Real Estate Association (CREA) and identify the quality of services provided by real estate professionals who are members of CREA. Used under license.