

# \$559,000 - 2207 8 Avenue Se, Calgary

MLS® #A2235469

**\$559,000**

1 Bedroom, 1.00 Bathroom, 693 sqft  
Residential on 0.07 Acres

Inglewood, Calgary, Alberta

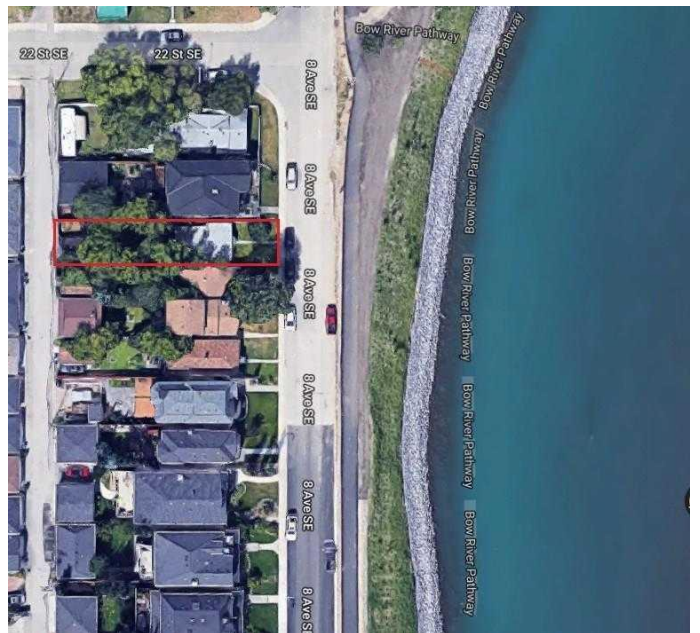
**LOCATION! LOCATION! LOCATION!** Seize this amazing opportunity to build the home of your dreams with unimpeded Bow River views and southwest facing back yard. Amazing access to the shops, restaurants and services of Inglewood and convenient transportation access to downtown and Deerfoot and Blackfoot Trails. Located just steps away from the Inglewood Bird Sanctuary with the Bow River path system literally right out your front door. Perfect for a family and walking distance to Colonel Walker Elementary school and the Inglewood Community Association.

Built in 1913

## Essential Information

MLS® #	A2235469
Price	\$559,000
Bedrooms	1
Bathrooms	1.00
Full Baths	1
Square Footage	693
Acres	0.07
Year Built	1913
Type	Residential
Sub-Type	Detached
Style	Bungalow
Status	Active

## Community Information



Address	2207 8 Avenue Se
Subdivision	Inglewood
City	Calgary
County	Calgary
Province	Alberta
Postal Code	T2G0P2

### Amenities

Parking Spaces	1
Parking	Stall
# of Garages	1

### Interior

Interior Features	See Remarks
Appliances	Dryer, Electric Stove, Refrigerator, Washer
Heating	Hot Water, Natural Gas
Cooling	None
Has Basement	Yes
Basement	Full, Unfinished

### Exterior

Exterior Features	None
Lot Description	Back Lane, Rectangular Lot, Views
Roof	Rubber
Construction	Stucco, Wood Frame
Foundation	Poured Concrete

### Additional Information

Date Listed	June 28th, 2025
Days on Market	3
Zoning	R-CG

### Listing Details

Listing Office	Realay
----------------	--------

Data is supplied by Pillar 9â„¢ MLS® System. Pillar 9â„¢ is the owner of the copyright in its MLS® System. Data is deemed reliable but is not guaranteed accurate by Pillar 9â„¢. The trademarks MLS®, Multiple Listing Service® and the associated logos are owned by The Canadian Real Estate Association (CREA) and identify the quality of services provided by real estate professionals who are members of CREA. Used under license.