

# \$975,000 - 1028 Shawnee Drive Sw, Calgary

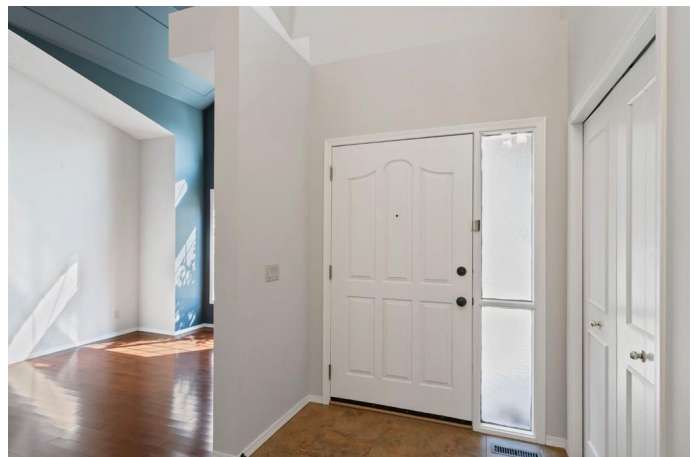
MLS® #A2240435

**\$975,000**

5 Bedroom, 4.00 Bathroom, 2,761 sqft  
Residential on 0.14 Acres

Shawnee Slopes, Calgary, Alberta

Backs onto green belt & forested Fish Creek Park. Beautifully maintained & updated FIVE bedroom family home (4 beds on top floor!) Plenty of room to adapt as your family or lifestyle evolves. Over 4000 sq ft of living space on THREE floors. Located in one of Calgary's most coveted natural settings. The main floor impresses right away - with vaulted ceilings & rich Hardwood floors. Natural South sunlight floods into this space! On your right - formal living/dining areas that transition directly to the kitchen. On your left, good sized hall closet, MAIN floor OFFICE, direct access to the double garage, laundry ROOM big enough to hang your clothes & 2 piece bath PLUS a door that leads directly outside = great dog run?! The heart of the home's a chef-inspired kitchen features granite counters, stainless steel appliances, travertine backsplash, custom WHITE / blue cabinetry & a walk-in pantry. Enjoy every day meals - with nature as your backdrop. Imagine morning coffee overlooking tranquil trees, walking paths at your doorstep. SO many windows - bringing the outside in! Transition out to your composite deck to maximize your experience of living here! Gas line for your BBQ. Big FLAT yard that gets lots of sun - good for gardening & perfect space for a trampoline! Hear the birds & catch sight of deer walking by on a regular basis! Open concept family room allows ultimate family enjoyment. Wood burning fireplace & built-ins. Upstairs offers spacious landing at top of stairs



+ FOUR spacious bedrooms, full bath & incredible primary SUITE with sitting area (yoga/reading/office?) walk-in closet & a spa-like ensuite w/quartz counters, double sinks, soaker tub, huge shower & heated floors. Finished basement includes a FIFTH bedroom, 3 pc bathroom, recreation room, hobby space & ample storage. This is a LIFESTYLE home - you don't want to miss! Shawnee Slopes is close to everything - yet tucked away...Speed bumps in community keep the pace "slower". Bike easily on multiple paths. Transit close by. Shops, amenities, restaurants - mins away. Fish Creek Provincial Park offers numerous benefits=one of largest urban parks in North America. Over 100 kms of trails cater to hiking, biking & wildlife viewing. Stoney trail takes you to COSTCO in 11 mins or downtown in under 25! TWO NEW furnaces 2025, Tankless Hot Water 2022, Central Vacuum March 2024, Warranty on roof shingles till 2027. This home is move in ready! Rare greenbelt-home in this price range don't miss out!

Built in 1989

### Essential Information

MLS® #	A2240435
Price	\$975,000
Bedrooms	5
Bathrooms	4.00
Full Baths	3
Half Baths	1
Square Footage	2,761
Acres	0.14
Year Built	1989
Type	Residential
Sub-Type	Detached
Style	2 Storey
Status	Active

## Community Information

Address	1028 Shawnee Drive Sw
Subdivision	Shawnee Slopes
City	Calgary
County	Calgary
Province	Alberta
Postal Code	T2Y 2T9

## Amenities

Parking Spaces	4
Parking	Double Garage Attached, Driveway
# of Garages	2

## Interior

Interior Features	Built-in Features, Central Vacuum, Chandelier, Closet Organizers, Double Vanity, Granite Counters, High Ceilings, Kitchen Island, No Smoking Home, Recessed Lighting, See Remarks, Soaking Tub, Storage, Vaulted Ceiling(s), Walk-In Closet(s), Bookcases
Appliances	Dishwasher, Dryer, Garage Control(s), Microwave, Range Hood, Refrigerator, Stove(s), Washer, Window Coverings
Heating	Forced Air, Natural Gas
Cooling	None
Fireplace	Yes
# of Fireplaces	1
Fireplaces	Wood Burning
Has Basement	Yes
Basement	Finished, Full

## Exterior

Exterior Features	BBQ gas line, Private Yard
Lot Description	Back Yard, Backs on to Park/Green Space, Few Trees, Lawn, No Neighbours Behind, Rectangular Lot, See Remarks
Roof	Cedar Shake
Construction	Brick, Stucco, Wood Frame
Foundation	Poured Concrete

## Additional Information

Date Listed	July 16th, 2025
Days on Market	40
Zoning	R-CG

## Listing Details

Listing Office          Royal LePage Benchmark

Data is supplied by Pillar 9â,,ç MLSÂ® System. Pillar 9â,,ç is the owner of the copyright in its MLSÂ® System. Data is deemed reliable but is not guaranteed accurate by Pillar 9â,,ç. The trademarks MLSÂ®, Multiple Listing ServiceÂ® and the associated logos are owned by The Canadian Real Estate Association (CREA) and identify the quality of services provided by real estate professionals who are members of CREA. Used under license.