

\$410,000 - Lot 3 Sharall Circle E, Rural Foothills County

MLS® #A2251119

\$410,000

0 Bedroom, 0.00 Bathroom,
Land on 3.82 Acres

NONE, Rural Foothills County, Alberta

Here is your chance to own your piece of Alberta Land. 3.82 acres with views of the majestic Rocky Mountains. Minutes to High River. Paved roads right to your driveway . Build your dream home in a quiet family friendly acreage living cul de sac.

Essential Information

| | |
|-----------|------------------|
| MLS® # | A2251119 |
| Price | \$410,000 |
| Bathrooms | 0.00 |
| Acres | 3.82 |
| Type | Land |
| Sub-Type | Residential Land |
| Status | Active |

Community Information

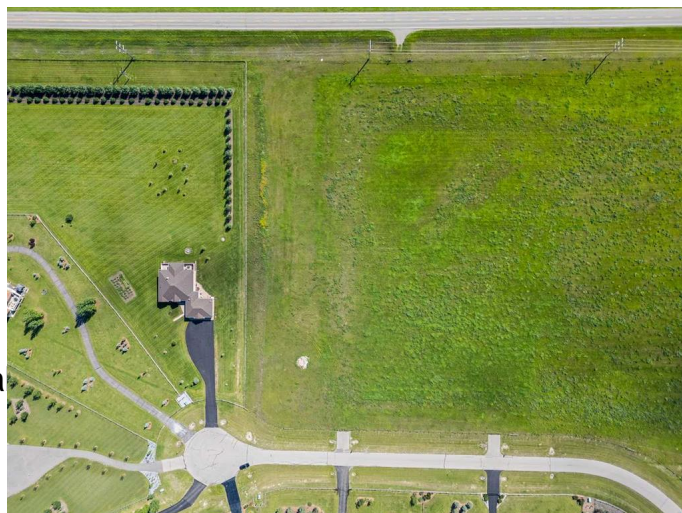
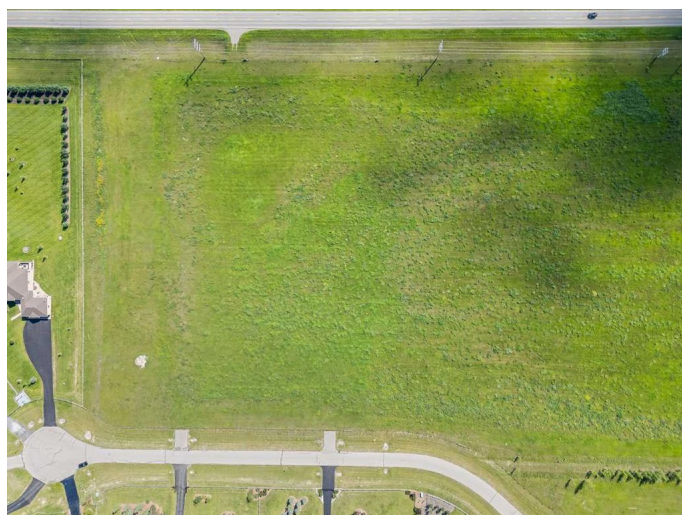
| | |
|-------------|------------------------|
| Address | Lot 3 Sharall Circle E |
| Subdivision | NONE |
| City | Rural Foothills County |
| County | Foothills County |
| Province | Alberta |
| Postal Code | T3J 4H1 |

Amenities

| | |
|-----------|--------------------------------------|
| Utilities | Electricity at Lot Line, Natural Gas |
|-----------|--------------------------------------|

Additional Information

| | |
|-------------|-------------------|
| Date Listed | August 24th, 2025 |
|-------------|-------------------|



| | |
|----------------|-----|
| Days on Market | 1 |
| Zoning | CRA |

Listing Details

| | |
|----------------|----------------------------|
| Listing Office | RE/MAX iRealty Innovations |
|----------------|----------------------------|

Data is supplied by Pillar 9â„¢ MLS® System. Pillar 9â„¢ is the owner of the copyright in its MLS® System. Data is deemed reliable but is not guaranteed accurate by Pillar 9â„¢. The trademarks MLS®, Multiple Listing Service® and the associated logos are owned by The Canadian Real Estate Association (CREA) and identify the quality of services provided by real estate professionals who are members of CREA. Used under license.